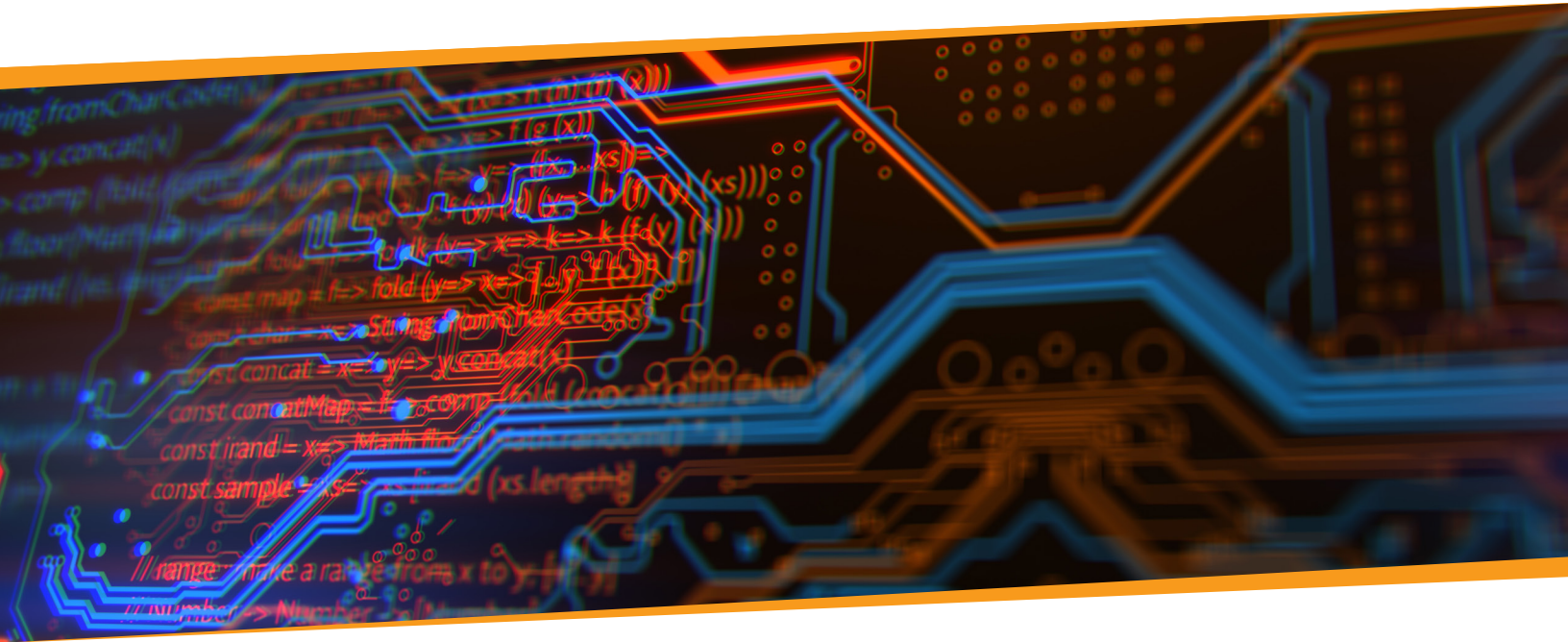


SINGLE COMMUNICATIONS LINK

ADDITIONAL COMMUNICATION
PATHWAY TO FIELD DEVICES



HARDLINE AND WIRELESS CAPABILITIES

The Single Communications Link (SCL) is a communication and control device designed to allow for an additional means of communication to field devices. SCL provides simultaneous and redundant communication pathways (i.e. radio and TCP/IP, or primary and secondary radio channels or any combination) to meet any project requirements. All communication media are online at all times, thus eliminating single point of failure issues.

Feedback to the CentrAlert C-DAC system indicates communication channel availability. Optional security with CentrAlert's standard 256-bit encryption provides protected data pathways over the communication channel.

Operational Features

- Supports VHF, UHF, WiFi, Ethernet and other communications
- Live connections to communication pathway
- Communication monitoring generates an alarm when channel goes offline
- Supports CentrAlert's 256-bit encryption standards
- Redundant communications

SINGLE COMMUNICATIONS LINK

ADDITIONAL COMMUNICATION PATHWAY TO FIELD DEVICES

Multiple Protocols

- DTMF
- Digital
- FSK
- XML
- CentrAlert 256-bit encryption on all devices

Multiple Communication Networks Supported

- Traditional: Analog, Digital, Trunked Radios, P25
- Ethernet: TCP/IP, VoIP, Radio Over IP (RoIP), Fiber Optic, Mixed Media
- Telco: Handset, POTS 2-Wire Landline

Available Alarms

- Communication failure on the channel

Power

- 120 VAC power supply

Other Features

- Hardshell, polycarbonate enclosure
- Validation LEDs flash to verify data
- Power on LED
- Audio level adjustment

Sample Communication Combinations

- VHF/UHF
- UHF/UHF
- VHF/IP
- UHF/IP
- VHF/Landline
- UHF/Landline
- IP/Landline

Measurements

- Height: 2.5"
- Width: 6"
- Depth: 7"
- Weight: 2 lbs